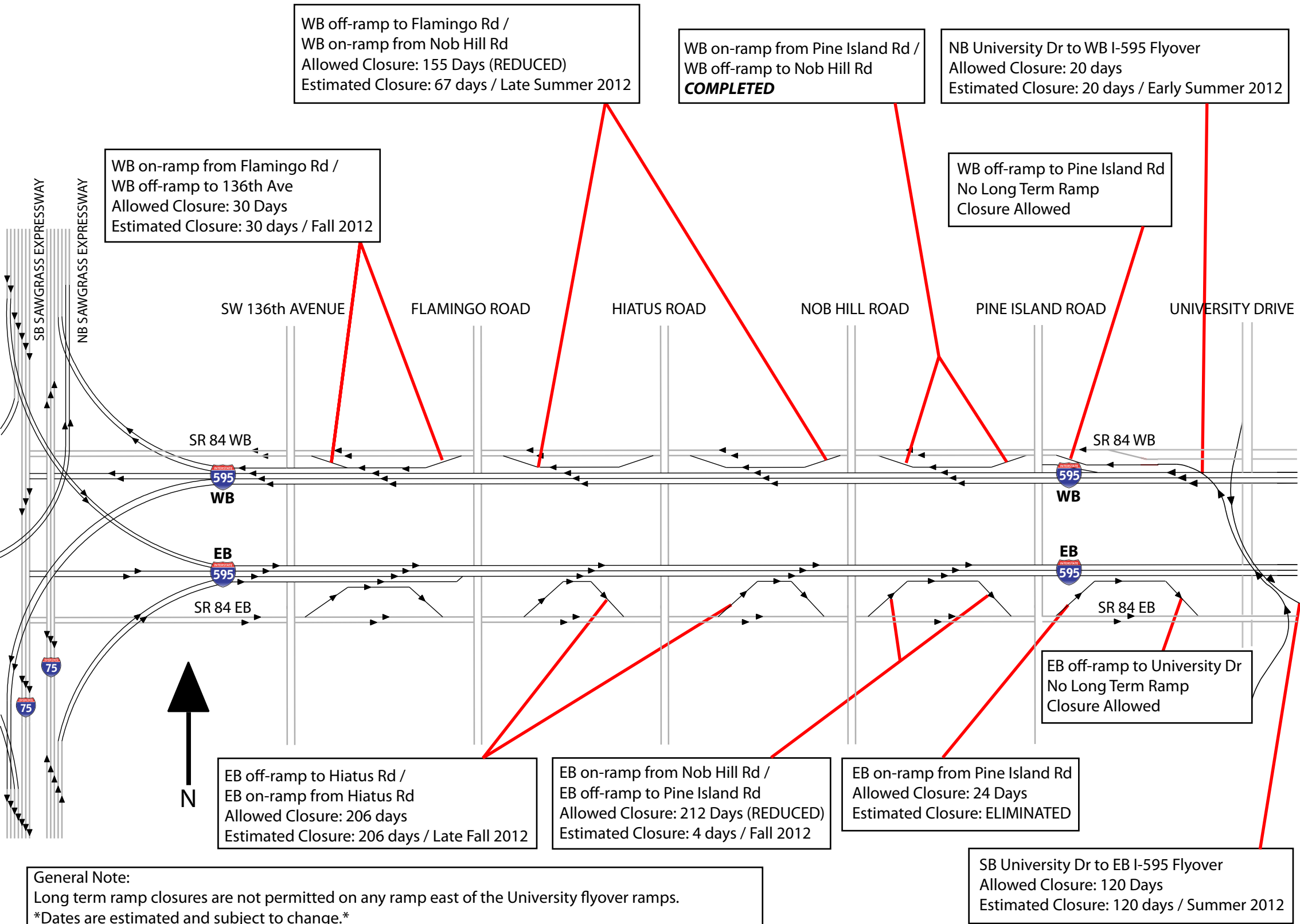


Long Term Ramp Closures



WB off-ramp to Flamingo Rd /
WB on-ramp from Nob Hill Rd
Allowed Closure: 155 Days (REDUCED)
Estimated Closure: 67 days / Late Summer 2012

WB on-ramp from Pine Island Rd /
WB off-ramp to Nob Hill Rd
COMPLETED

NB University Dr to WB I-595 Flyover
Allowed Closure: 20 days
Estimated Closure: 20 days / Early Summer 2012

WB on-ramp from Flamingo Rd /
WB off-ramp to 136th Ave
Allowed Closure: 30 Days
Estimated Closure: 30 days / Fall 2012

WB off-ramp to Pine Island Rd
No Long Term Ramp
Closure Allowed

SW 136th AVENUE

FLAMINGO ROAD

HIATUS ROAD

NOB HILL ROAD

PINE ISLAND ROAD

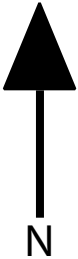
UNIVERSITY DRIVE

SR 84 WB
595
WB

SR 84 WB
595
WB

SR 84 EB
595
EB

SR 84 EB
595
EB



EB off-ramp to Hiatus Rd /
EB on-ramp from Hiatus Rd
Allowed Closure: 206 days
Estimated Closure: 206 days / Late Fall 2012

EB on-ramp from Nob Hill Rd /
EB off-ramp to Pine Island Rd
Allowed Closure: 212 Days (REDUCED)
Estimated Closure: 4 days / Fall 2012

EB on-ramp from Pine Island Rd
Allowed Closure: 24 Days
Estimated Closure: ELIMINATED

EB off-ramp to University Dr
No Long Term Ramp
Closure Allowed

General Note:
Long term ramp closures are not permitted on any ramp east of the University flyover ramps.
Dates are estimated and subject to change.
**Closures where construction crews reduced the number of estimated days closed may fluctuate.

SB University Dr to EB I-595 Flyover
Allowed Closure: 120 Days
Estimated Closure: 120 days / Summer 2012